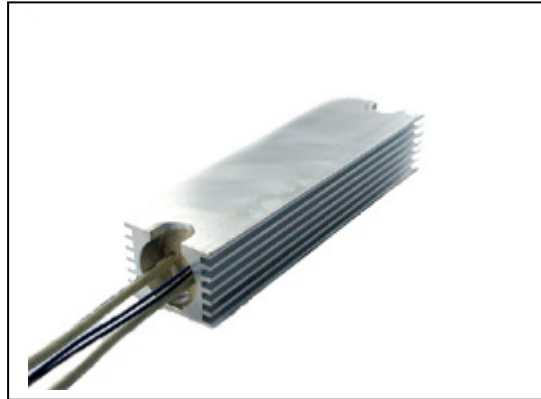


Braking resistance for Hitachi SJ 200 inverters



PWR-S 100



PWR-R 150 / 300

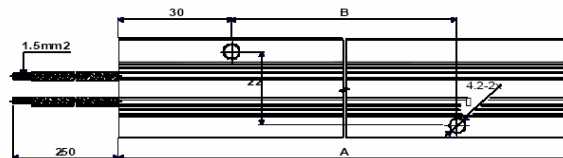
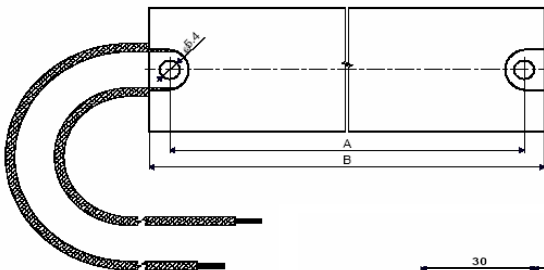
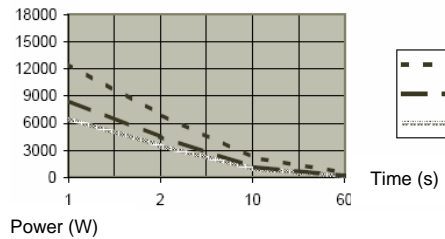
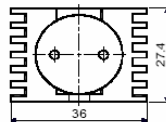
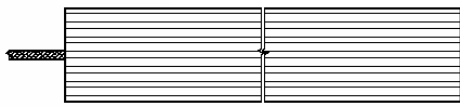
Electrical Characteristics
 Nominal Load
 max. working voltage
 Thermal Time Constant
 Dimensions :

PWR-S 100
 100 W
 1000 V
 9 min
 120 mm
 30 * 15 mm

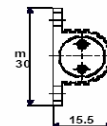
PWR-R 150
 150 W
 1500 V
 10 min.
 90 mm
 36 * 28 mm

PWR-R 300
 300 W
 1500 V
 10 min.
 155 mm
 36 * 28 mm

Resistance PWR-R



Résistance PWR-S



Hitachi inverter	Resistance	Power	Recommended resistance
SJ 200 007 → 011 NFE	47 ohms	150/100 W	PRW – R 090*36 047-150 or PRW – S 120*30 047-100
SJ 200 015 → 022 NFE	47 ohms	300 W	PRW – R 155*36 047-300
SJ 200 004 → 015 HFE	200 ohms	150 W	PRW – R 090*36 200-150
SJ 200 022 → 040 HFE	100 ohms	300 W	PRW – R 155*36 100-300
SJ 200 055 → 075 HFE	75 ohms	600 W	PRW – R 155*36 150-300 (2 resistances in //)